

Build the future

www.everdigm.com

EVERDIGM

Tower crane

ED580L-24

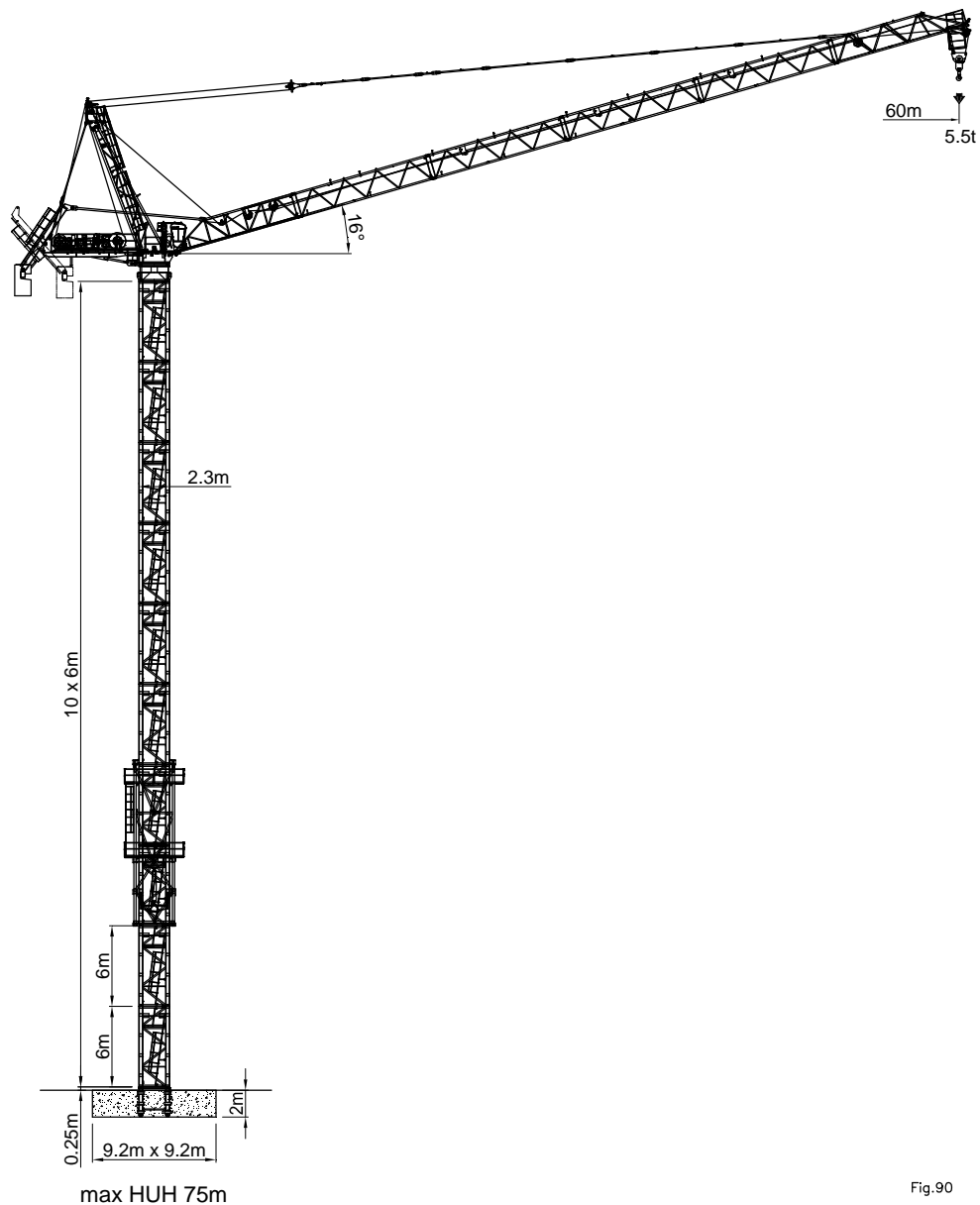


Fig.90

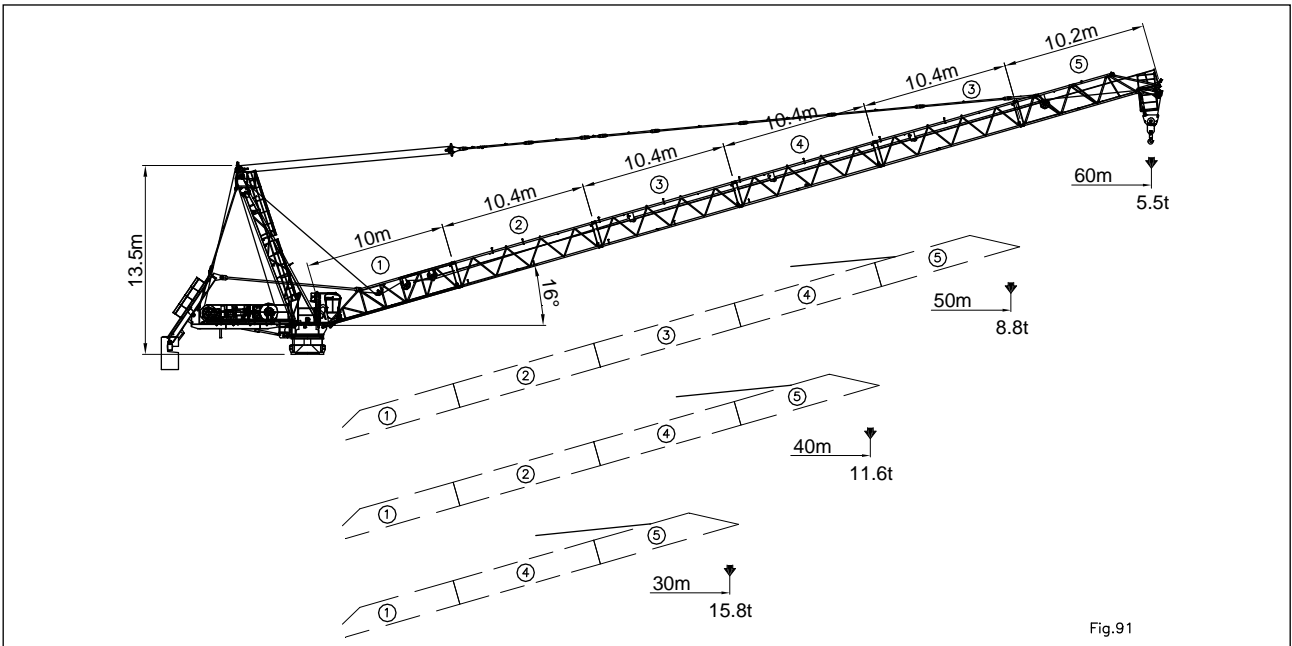


• FEM 1.001 A3

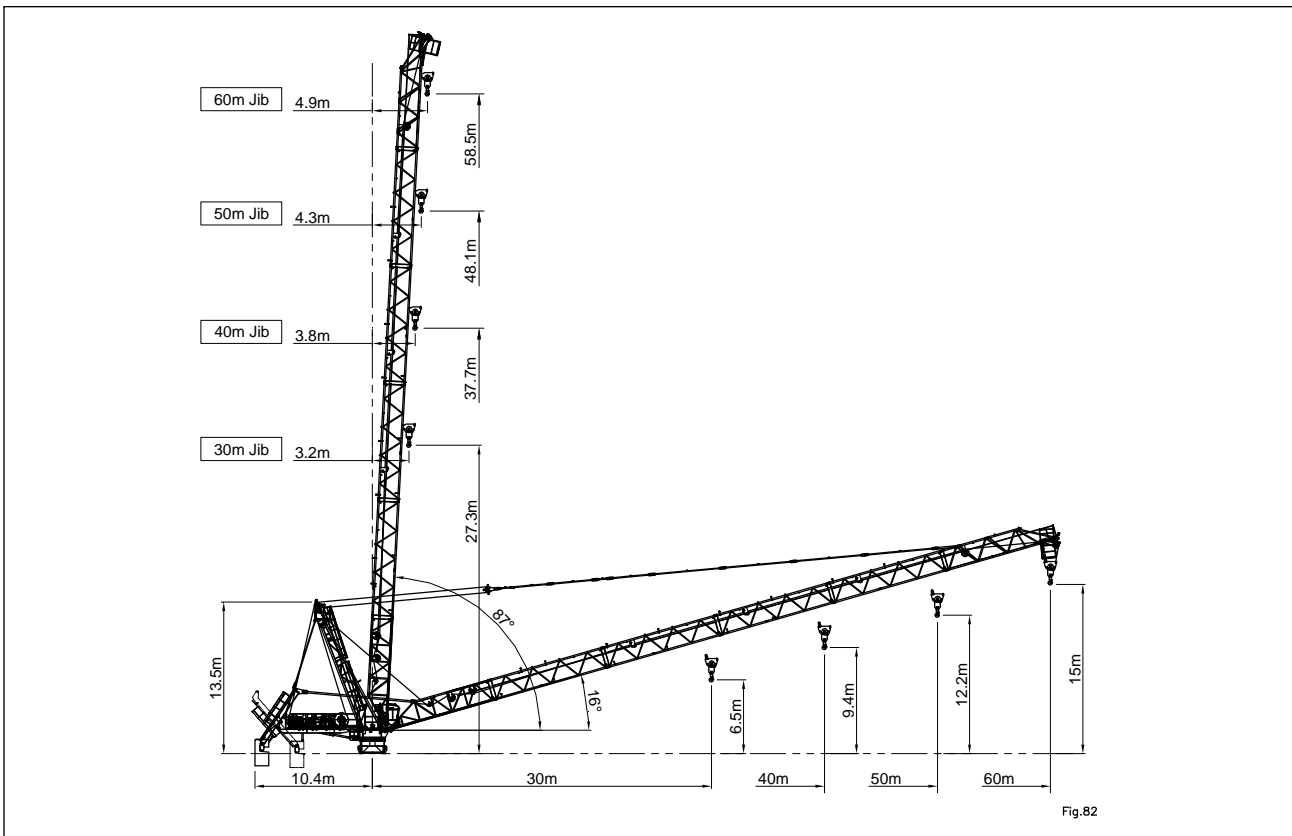
*HUH : Height under hook

01. Jib combination

ED580L-24





02. Radius and hoisting height



03. Radius and capacity

ED580L-24

Jib length m	Max capacity (m/kg)		Radius & Hoisting capacity										
			m/kg	16	20	24	30	35	40	45	50	55	60
60	5.2 – 30.0 12,000	4.9 – 16.0 24,000	2 fall	24,000	18,850	15,417	11,983	10,021	8,550	7,406	6,490	5,741	5,200
			1 fall	12,000	12,000	12,000	12,000	10,321	8,850	7,706	6,790	6,041	5,500
50	4.6 – 38.0 12,000	4.3 – 20.0 24,000	2 fall	24,000	24,000	19,695	15,389	12,929	11,084	9,648	8,500		
			1 fall	12,000	12,000	12,000	12,000	12,000	11,384	9,948	8,800		
40	4.1 – 39.0 12,000	3.8 – 24.0 24,000	2 fall	24,000	24,000	24,000	17,650	14,021	11,300				
			1 fall	12,000	12,000	12,000	12,000	12,000	11,600				
30	3.5 – 30.0 12,000	3.2 – 24.0 24,000	2 fall	24,000	24,000	24,000	15,800						
			1 fall	12,000	12,000	12,000	12,000						

04. Driving performance

Hoist winch 147kW - 147HF680 - AC- Stepless



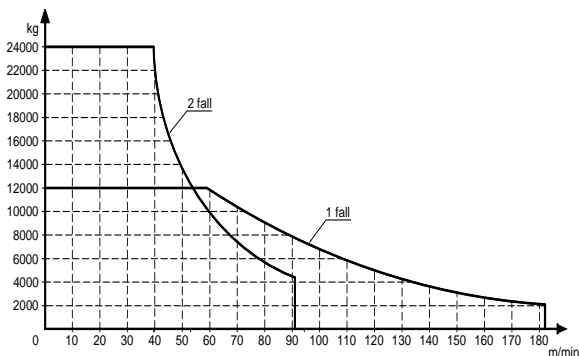
1 Part 2,100kg 0 ~ 182m/min

Line 12,000kg 0 ~ 57m/min




2 Part 4,200kg 0 ~ 91m/min

Line 24,000kg 0 ~ 29m/min



Electrical information

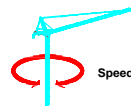
Power supply  3ph x 380V, 50/60Hz (Standard)
3ph x 415V, 50/60Hz (Option)

Control circuit 24Vdc

Power consumption 250kVA

Power cable PNCT x 95SQ x 4Core

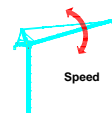
Slewing machinery 2Drive units -AC- Stepless



2 x 8.6kW – AC

0 – 0.71rpm

Luffing winch 67kW - AC - Stepless



67kW – AC

1min 41s ~ 2min 44s






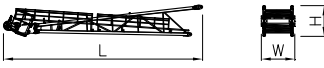


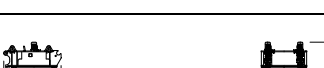
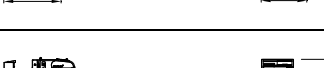
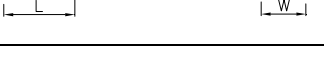
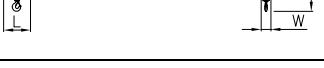

Hoist wire rope - Standard 400m

Necessary wire length according to mast height

$$W = (H \times P) + (R \times P) + R + 46$$


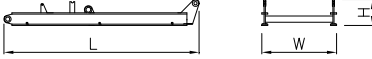
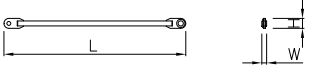
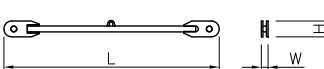

- W (Wire length)
- H (Mast height)
- P (Part line) = 1 or 2
- R (Jib length)

Upper part

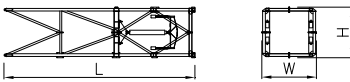
Description	Q'ty	Sketch	Dimension(m)			Weight (kg,±5%)		
			L	W	H	Unit	Total	
No.1	1		10.210	2.300	1.960	3,400	-	
No.2	1		10.560	1.910	1.980	1,390	-	
Jib-single element	No.3	2		10.560	1.910	1.980	1,490	2,980
No.4	1		10.560	1.910	1.980	1,510	-	
No.5	1		10.490	1.910	2.510	2,790	-	
Top tower ass'y	1		12.510	2.110	1.920	6,700	-	
Hoist winch	1		3.560	2.330	1.450	9,700	-	
Luffing winch	1		2.910	2.000	1.330	4,400	-	
Turn table ass'y	1		2.890	2.300	2.625	13,200	-	
Operating cabin & Platform ass'y	1		3.580	2.255	2.500	2,200	-	
Hook block	1		1.130	4.10	2.125	1,500	-	
Counter weight block	8		1.220	0.300	2.350	6,000	48,000	
Counter jib ass'y	1		6.945	2.100	2.100	5,300	-	

06. Packing list I continued I



ED580L-24

Description	Q'ty	Sketch	Dimension(m)			Weight (kg,±5%)		
			L	W	H	Unit	Total	
Weight bed	1		4.500	0.680	0.690	1,300	-	
Ballast lever	1		6.135	2.350	0.815	3,300	-	
Connection bar	1		10.135	0.125	0.250	400	800	
Tie bar element	2000L		2.250	0.084	0.200	135	-	
	6300L		4	6.550	0.084	0.200	250	1,000
	3750L		1	4.000	0.084	0.200	160	-
	1290L		1	1.540	0.084	0.200	75	-
	4000L		1	4.250	0.084	0.200	170	-
	3200L		1	3.450	0.084	0.200	140	-
	1300L		1	1.550	0.084	0.200	75	-
Luffing block	1		1.390	0.570	0.900	410	-	

Climbing equipment

Climbing cage ass'y	1		12.000	3.435	3.190	14,000	-
---------------------	---	---	--------	-------	-------	--------	---

Mast

6m Mast section	10		6.000	2.290	2.310	6,500	65,000
Foundation anchor	1		2.250	2.450	2.470	2,480	-

max. Mast height 510m

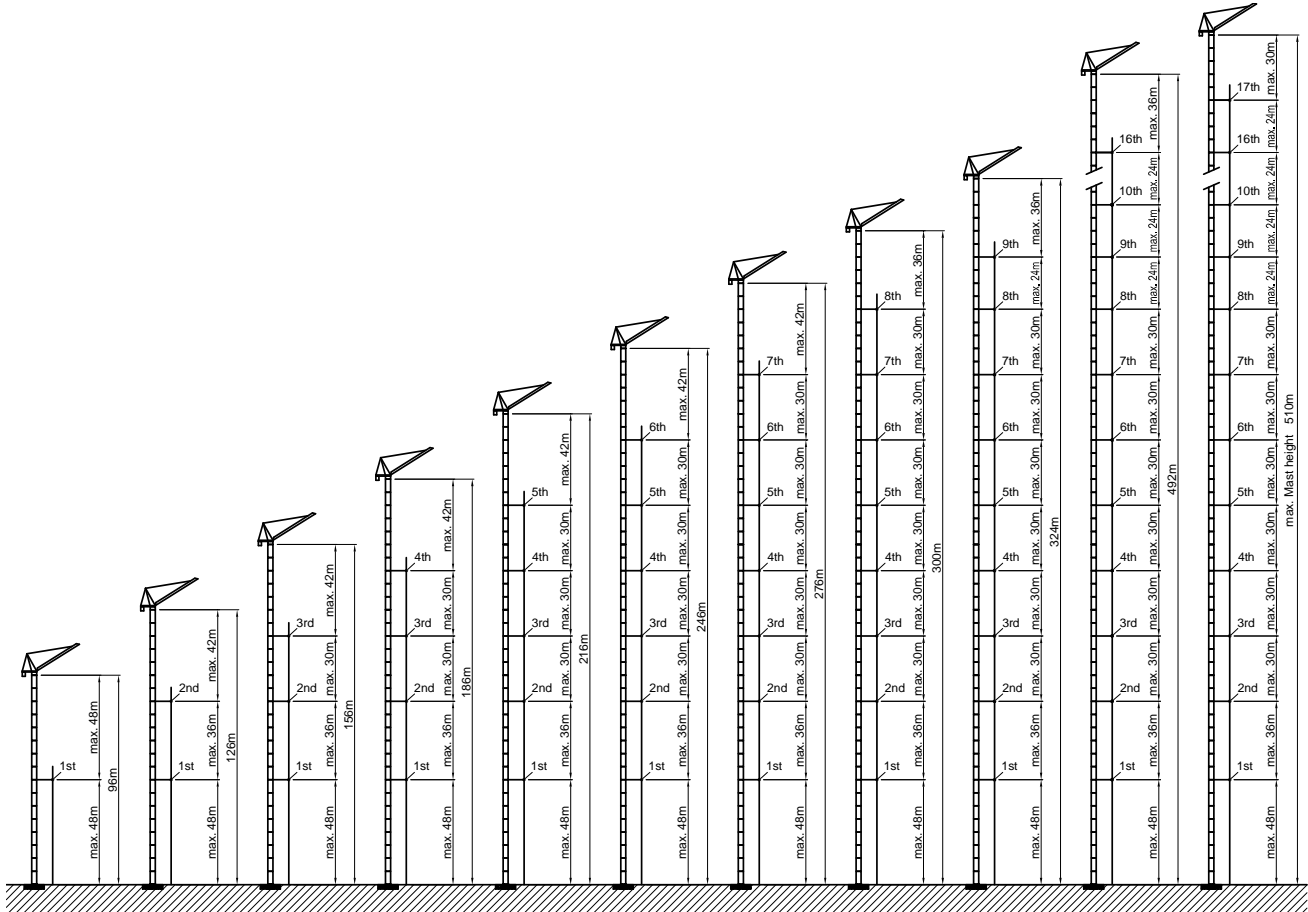


Fig.83